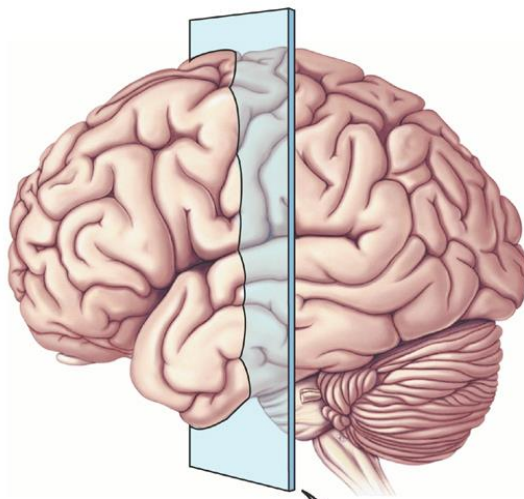
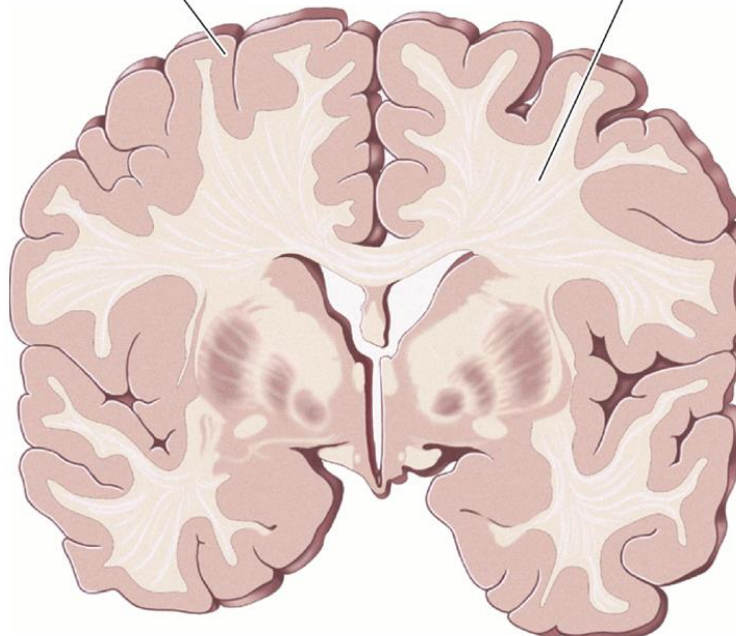


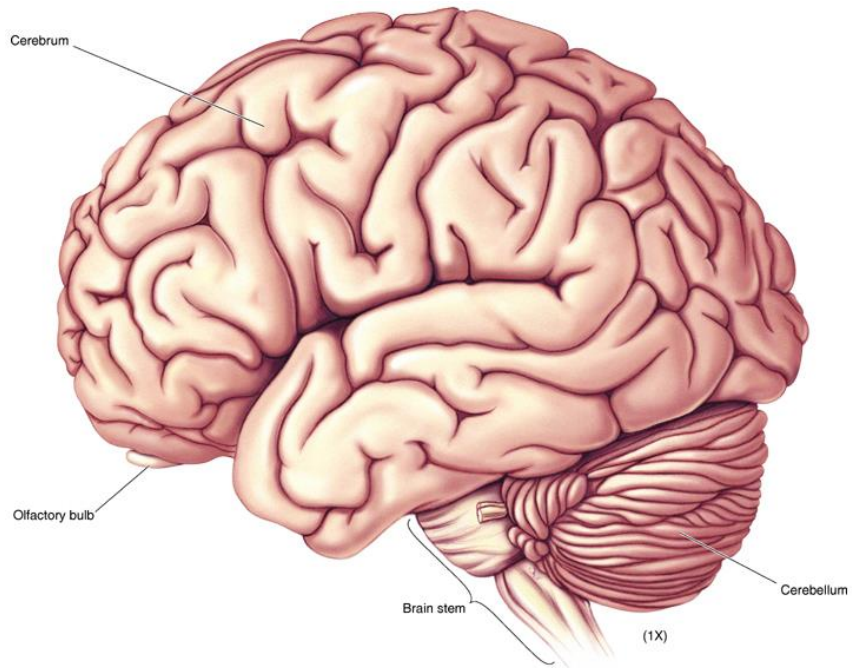
좌우 뇌 기본적 내용  
Dr. Belli 강의 준비



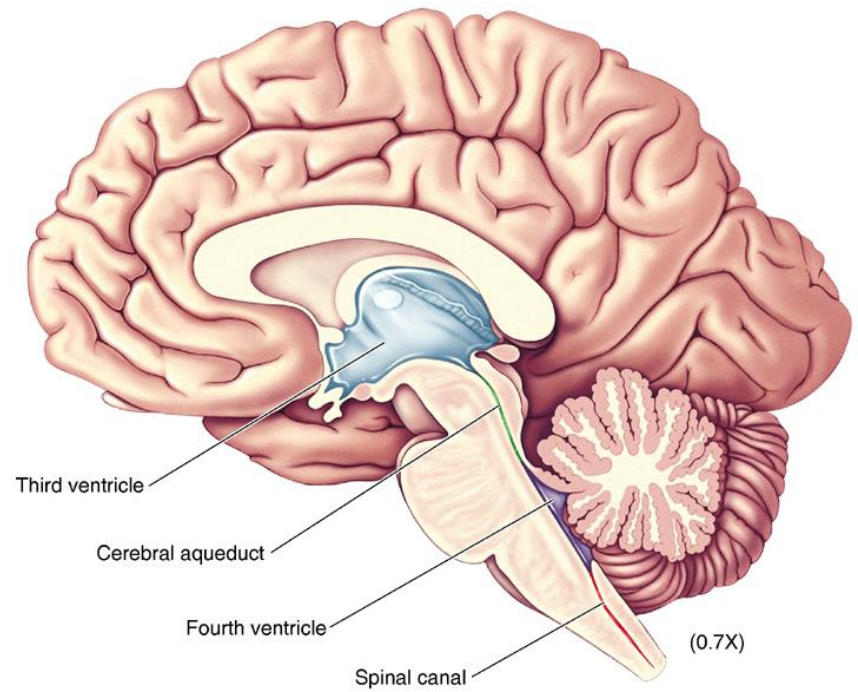
Gray matter

White matter

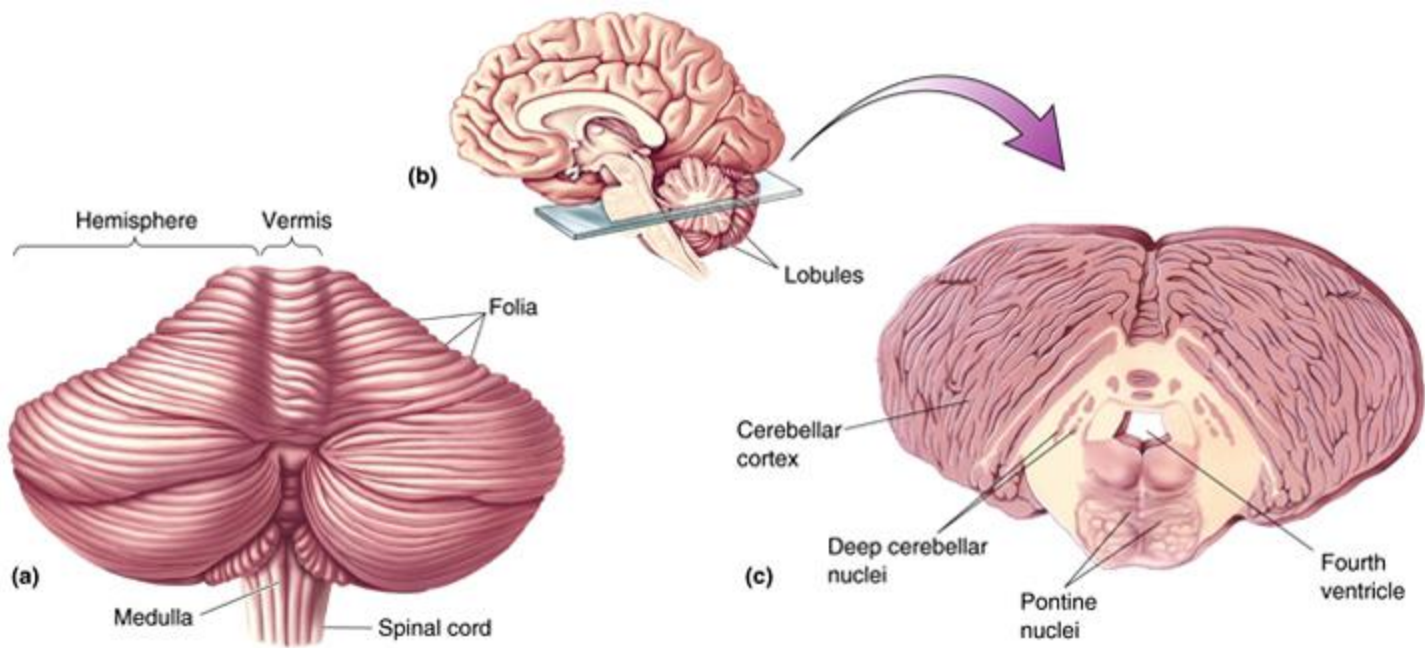




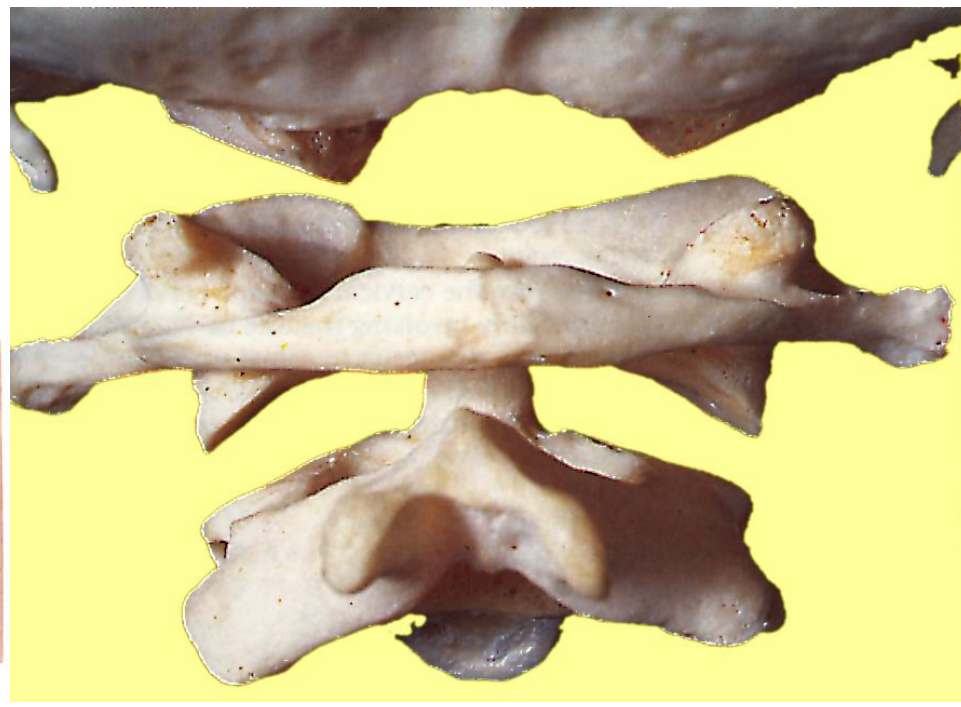
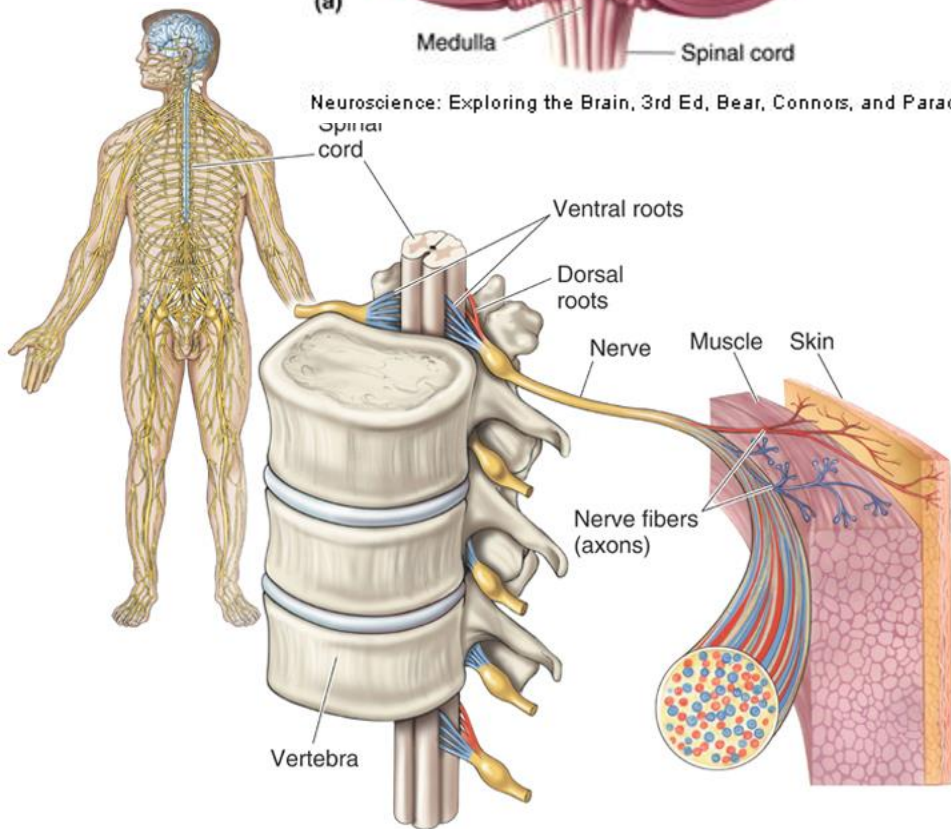
Neuroscience: Exploring the Brain, 3rd Ed, Bear, Connors, and Paradiso Copyright © 2007 Lippincott Williams & Wilkins



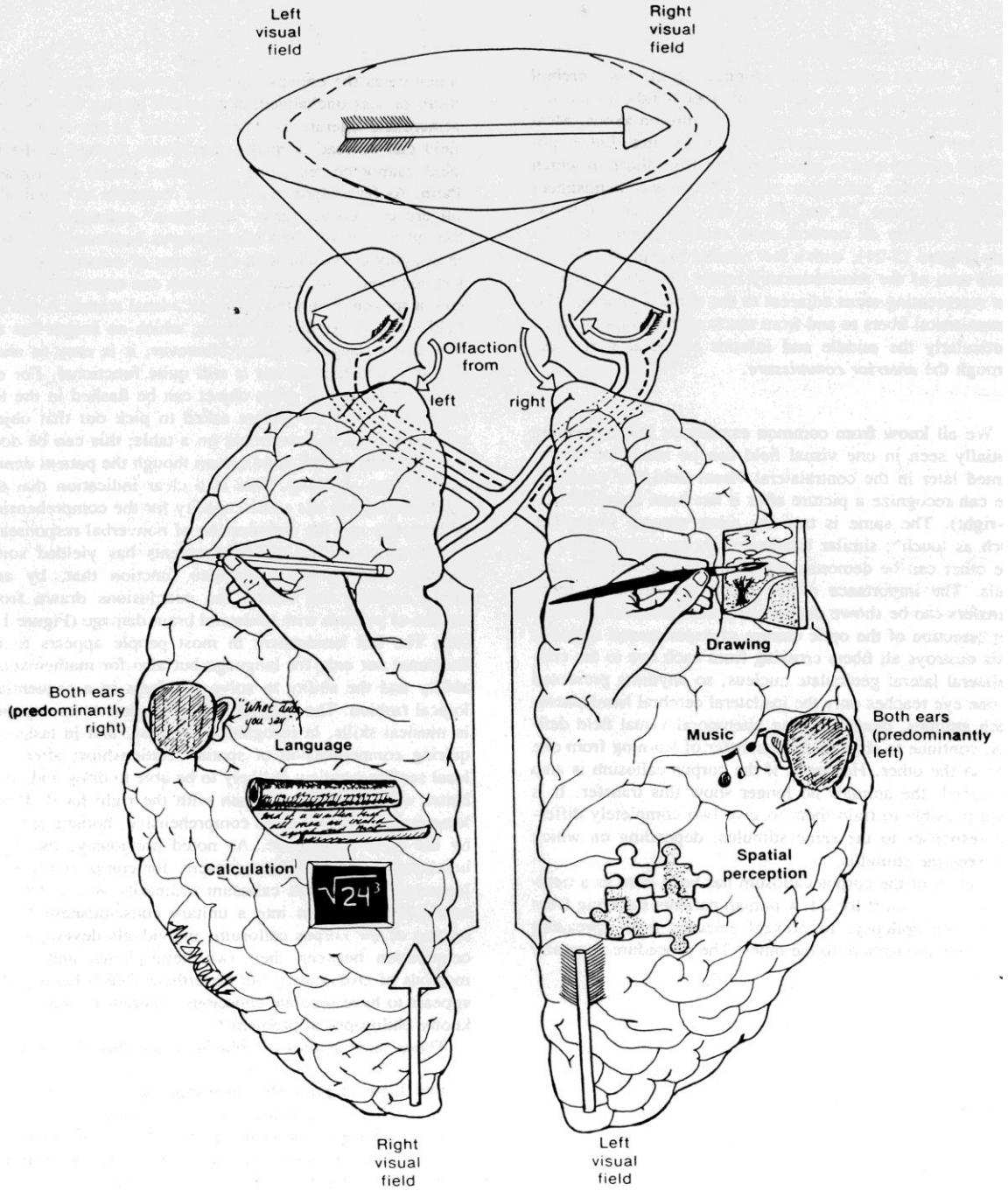
Neuroscience: Exploring the Brain, 3rd Ed, Bear, Connors, and Paradiso Copyright © 2007 Lippincott Williams & Wilkins



Neuroscience: Exploring the Brain, 3rd Ed, Bear, Connors, and Paradiso Copyright © 2007 Lippincott Williams & Wilkins







Left  
visual  
field

Right  
visual  
field

Olfaction  
from  
left  
right

Both ears  
(predominantly  
right)

Language

Calculation

$$\sqrt{24^3}$$

Right  
visual  
field

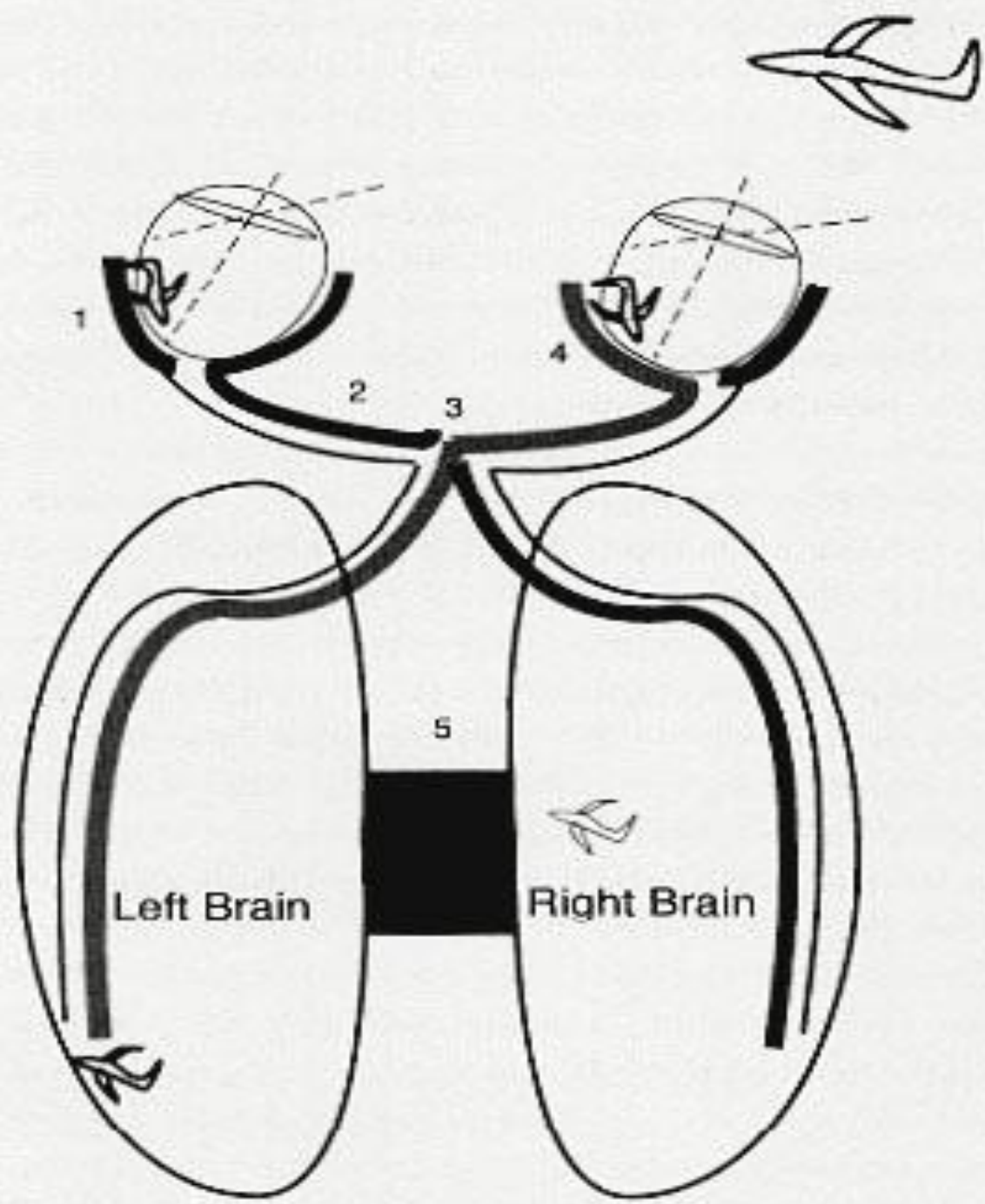
Drawing

Music

Spatial  
perception

Both ears  
(predominantly  
left)

Left  
visual  
field

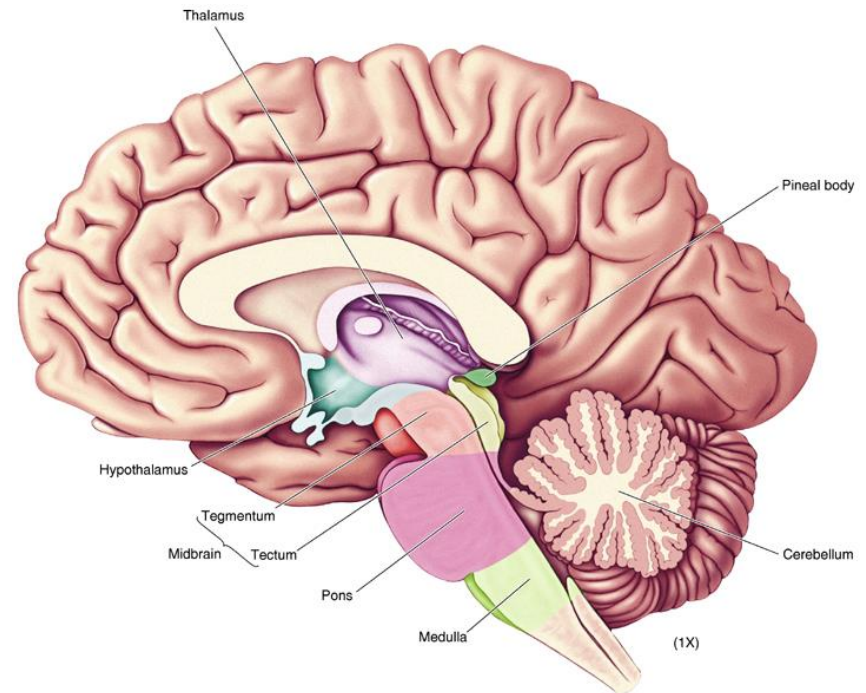


# 뇌기능

- Inhibit inhibitory pathway to ventral horn cell (major neocortical output) ipsilateral, 같은 쪽으로 억제-억제-앞뿔세포-기관에서 작용
- 자세: 흉추6번 위쪽은 앞쪽 근육의 긴장도 억제, 흉추 6번 아래는 뒤쪽 근육의 긴장도 억제
- 자율신경의 중심성 조절
- 통증의 중심성 조절

# Neocortical output

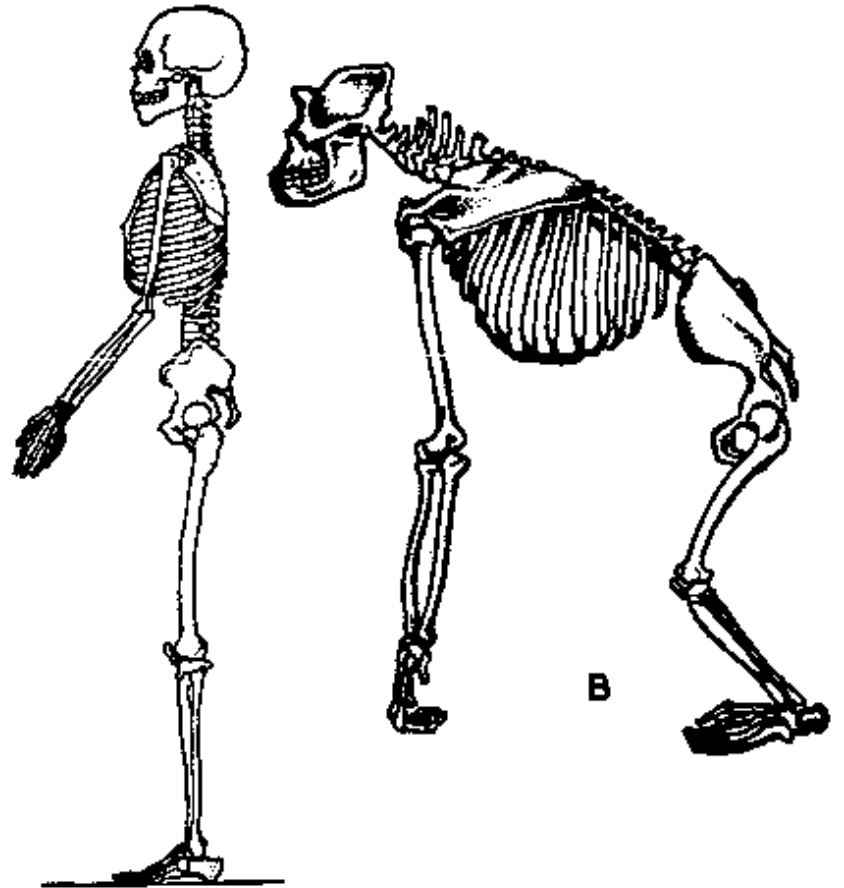
- Monosynaptically synapse pontomedullary reticular formation
- inhibit to inhibitory pathways to ventral horn cell
- posture: inhibit ant m above T6 and post muscle below T6
- autonomic control : caudal medulla inhibit rostral IML of cord.
- Central modulation of nociception
- Decreased cortical output--organ systems fail...



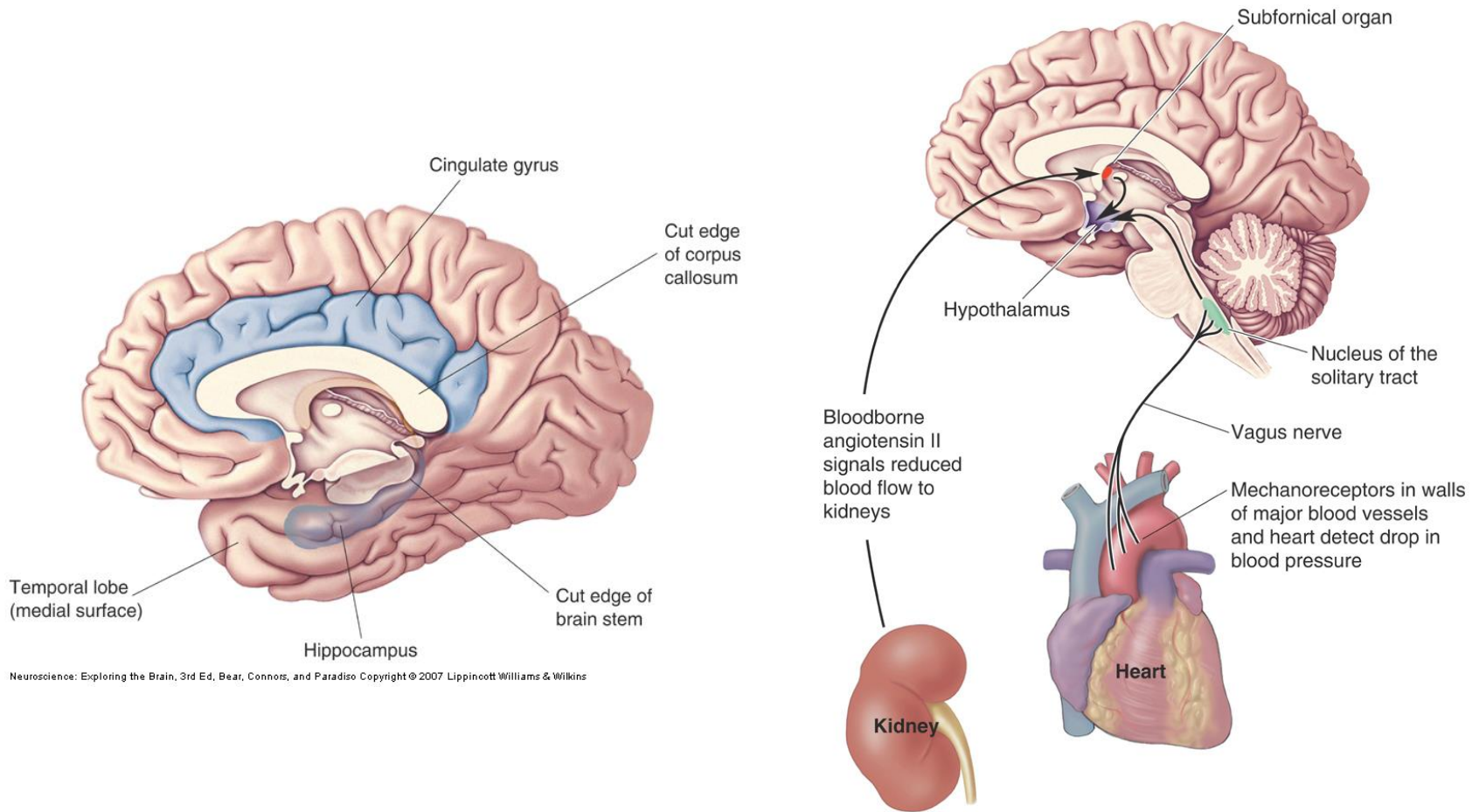


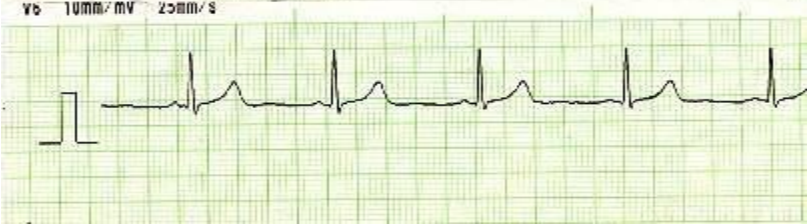
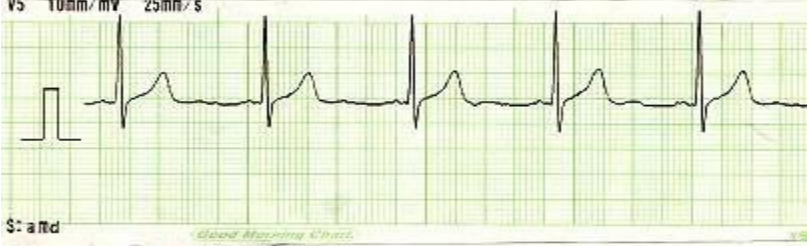
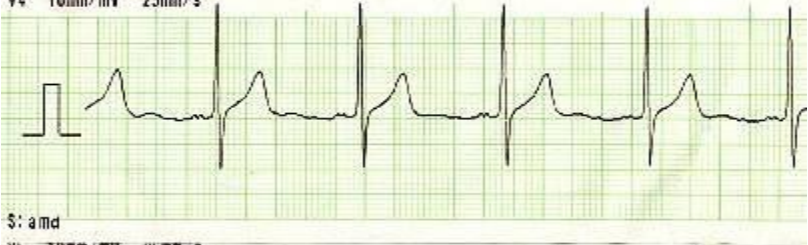
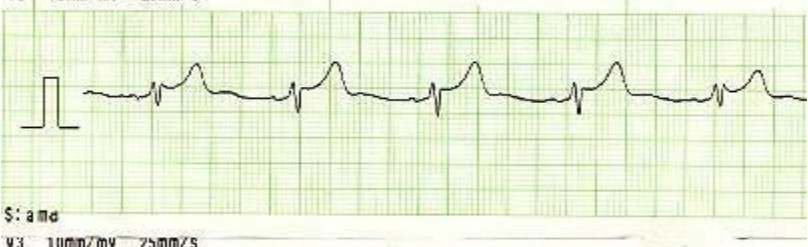
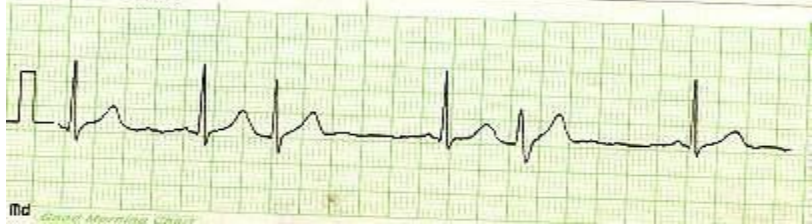
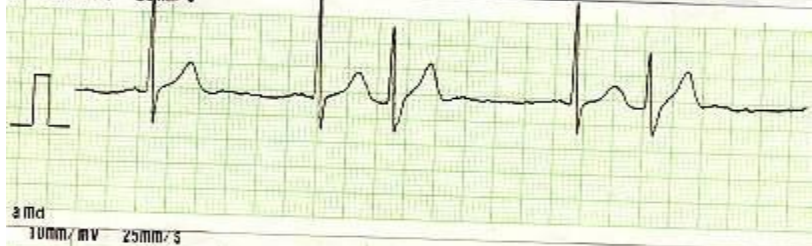
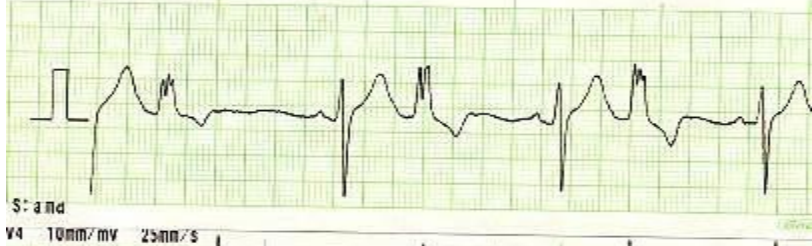
# 뇌기능과 자세

- 자세
  - 흉추6번 위쪽은 앞쪽 근육의 긴장도 억제
  - 흉추 6번 아래는 뒤쪽 근육의 긴장도 억제

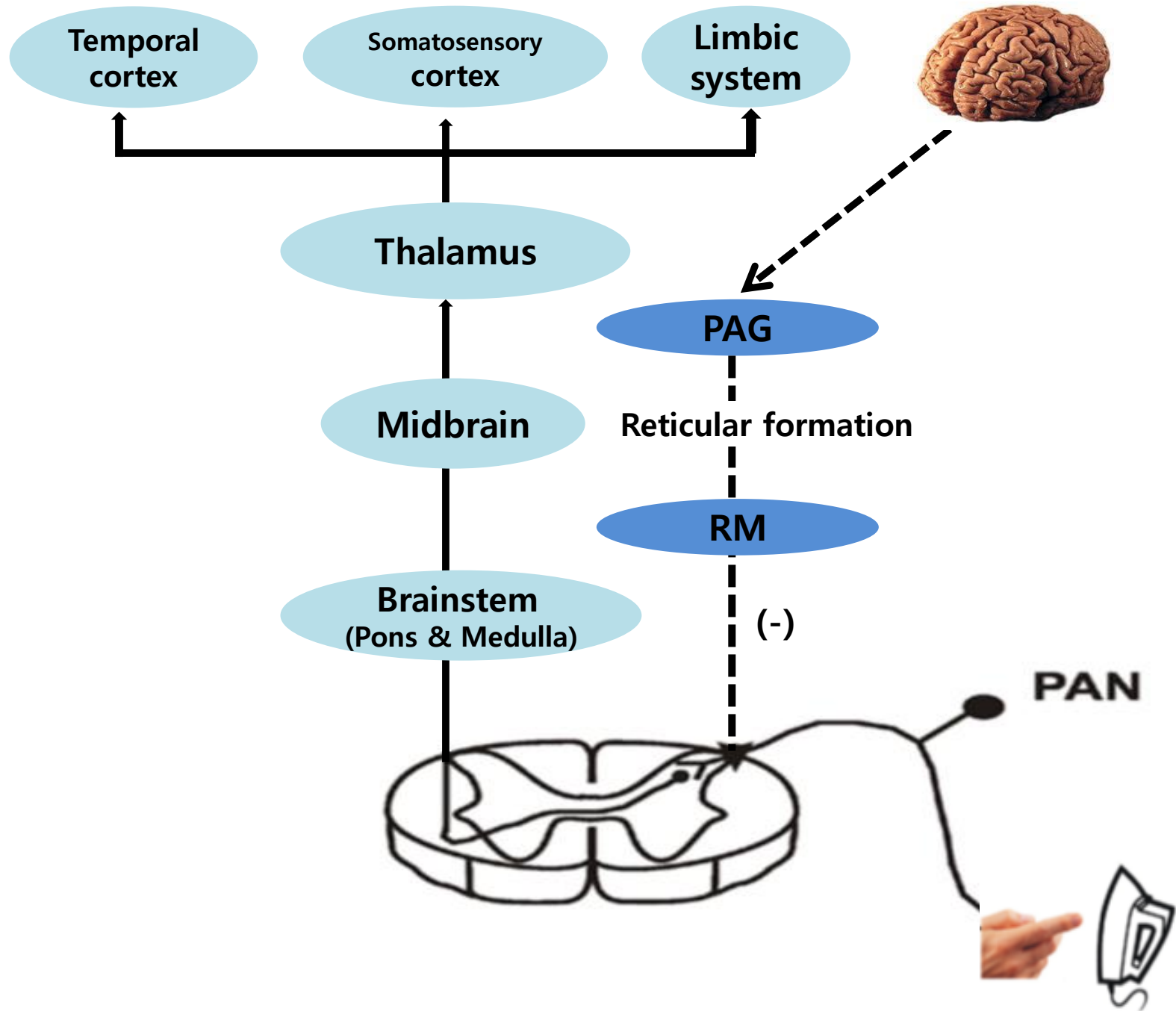


# 자율신경의 중심성 조절 central control of ANS







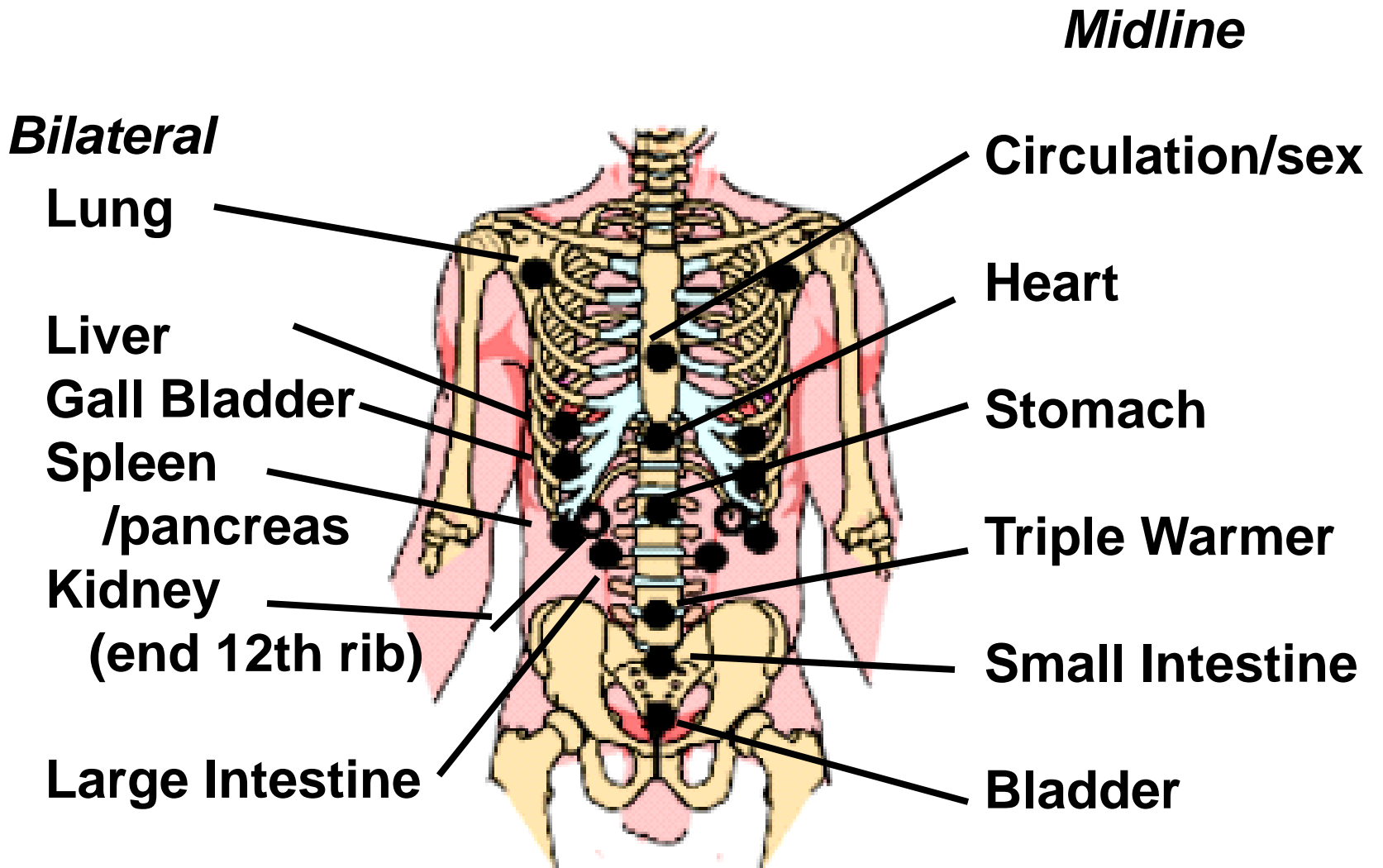


# Dr. Belli강의 준비

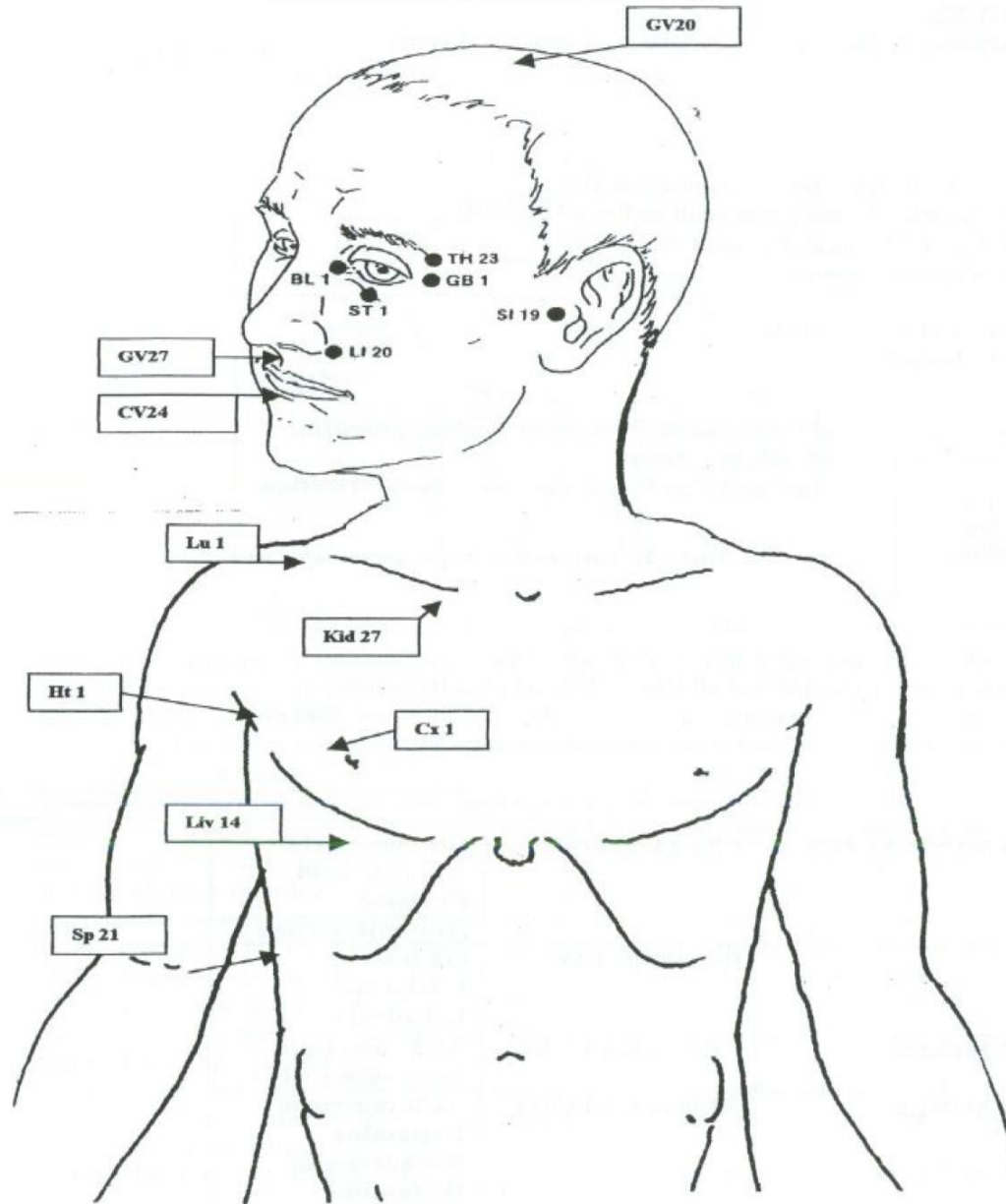
- injury recall technique
- alarm points and the B&E points on the head as well as related neurotransmitters
- the P.L.U.S. technique
- normally inhibited and facilitated muscles of gait position.
- important to be familiar with reflexes for immune system (Chapman's reflexes for thymus and spleen etc.).



# Alarm Points



# BEGINNING AND END POINTS



# Major neurotransmitter production area

- Raphe magnus (serotonin) BL 1
- Locus ceruleus(norepinephrine) SI 19
- Mesencephalic ventral tegmental area (dopamine) GV 27
- Basal nucleus (Acetylcholine) GB 1
- Ventral post. Hypothalamus (histamine) ST 1
- Caudal hypothalamus (GABA) LI 20

# Chapman's Reflexes (& VRPs) for the Immune System

